



**Gorman  
Dynamics**

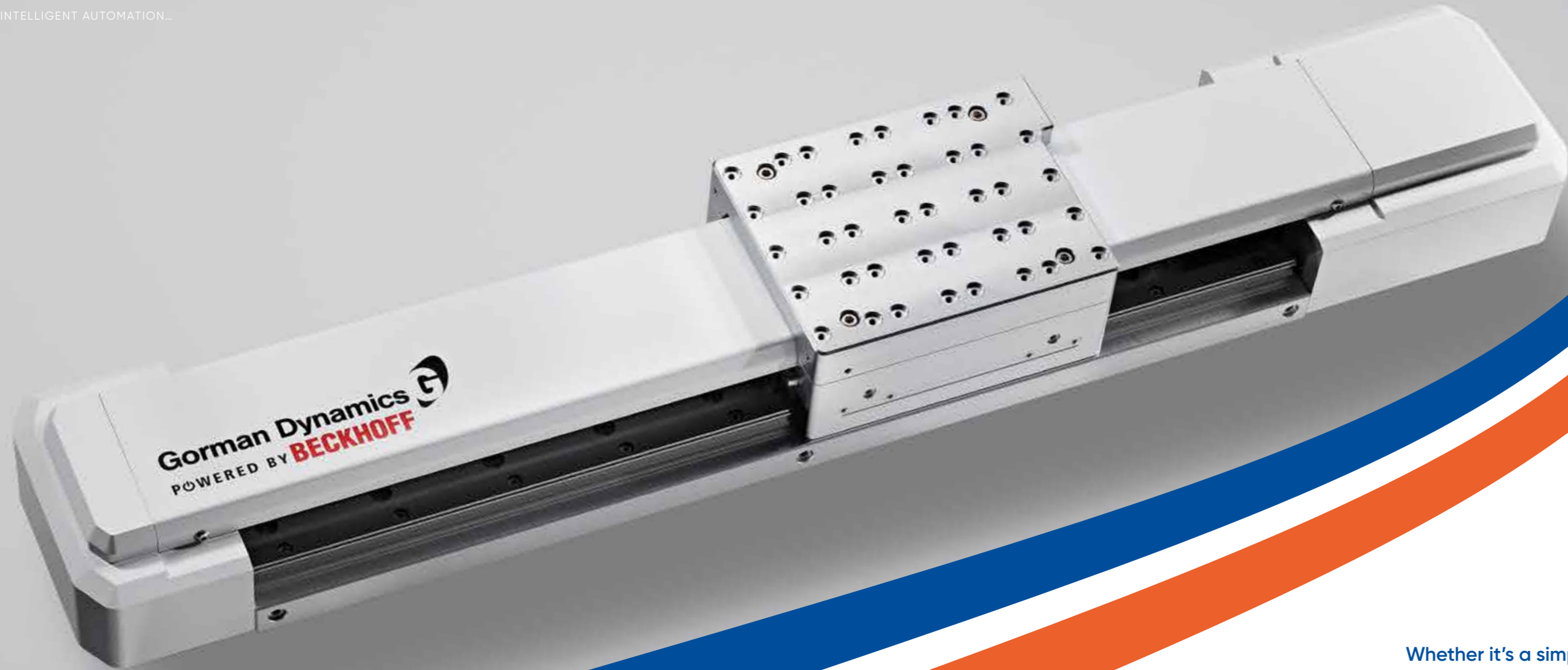
INTELLIGENT AUTOMATION...  
YOUR PARTNER IN MOTION

# Automation made easy

**Automation is the response to an ever intensifying demand for greater productivity, more efficiencies and increased reliability.**

As this need has escalated, the solutions have become more complex.

Gorman Dynamics have now made being better easier.



Whether it's a simple repetitive task being automated, or a complex process, high levels of precision are always required. And that means careful and deliberate engineering.

Using intelligent automation, Gorman Dynamic's Beckhoff-powered systems learn by doing, removing the need for complicated and expensive bespoke software development.

If you know what you want to happen and you can show it, you can make it happen. Easily.

Easy and  
intelligent  
Automation  
~~made easy~~

~~Easy and intelligent~~  
**Automation**  
a child could use

**Learn by doing. It's how children learn. Show them something, ask them to repeat it. Check they've done it correctly. Off they go.**

That's how our teachable software works. Place the components where you want them, save the location and repeat. Create a sequence and our system learns it instantly.

Gorman Dynamic's precision and ingenuity, coupled with Beckhoff's reliability, have created the next level in intelligent automation.



# Intuitive Automation *a child could use*

Whether you require tools for loading and unloading, assembly, packaging, picking and placing, handling, sorting, or piling and spacing; Gorman Dynamics' modular system is the answer you've been waiting for.

It sounds too good to be true. A Beckhoff-powered system, that requires minimal set-up and virtually no software engineering; an perceptive machine that's no more complicated than a simple cellphone.

Gorman Dynamics' intelligent automation is so intuitive, it feels almost natural.



INTELLIGENT AUTOMATION...



# ~~Intuitive~~ Automation made easy

Designed with versatility in mind, Gorman Dynamics modular system and intuitive software solution enables seamless integration.

Without the need for intricate and time-consuming programming, our intention is to create a truly integrated platform for all of your automated needs.

Gorman Dynamics have made being better easier.

YOUR PARTNER IN MOTION

# The world of Automation is evolving...

**Machines become smaller, more precise, more reliable. Better. But as their capabilities improve, one thing hasn't changed. How complicated these systems are.**

Sure, the tasks we ask these robots to perform might be difficult. They're repetitive. They involve many actions and have low tolerances for error. They're complex, yet how we manage them doesn't have to be.

At Gorman Dynamics our intention is to design the next generation of automation. Solutions that are as precise, reliable and efficient as anything else on the market. But with one difference: ours are simple to use.

We've pioneered a 'plug and play' system. Machines that need very little programming, they learn by doing; and they're modular too. Not only that, our machines know when you've added something to the process, they're intuitive. And they're powered by Beckhoff, so you know they're reliable.

We've created something unique in the market. We're proud to be part of automations's evolution.

**We're making automation easy.**









**Gorman  
Dynamics**

## Intelligent Automation Your Partner in Motion

If you know what you want to happen and you can show it, you can make it happen. Easily.

Get in touch...

TELEPHONE.

+44 (0)1202 118 444

EMAIL.

[SALES@GORMANDYNAMICS.COM](mailto:SALES@GORMANDYNAMICS.COM)

[GORMANDYNAMICS.COM](http://GORMANDYNAMICS.COM)